



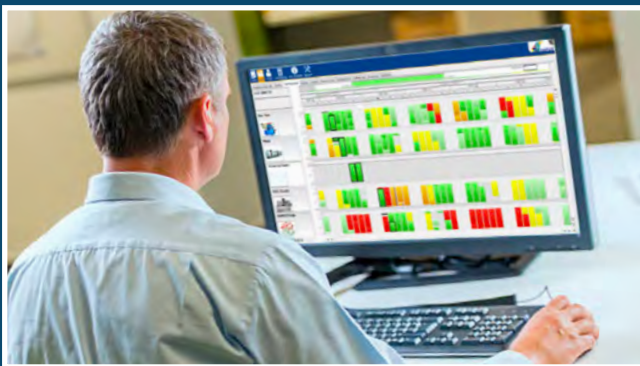
*Accelerate production.
Unleash potential.*

*Scheduling and machine monitoring
software designed for the shop floor.*



Most adaptable. Highest efficiency.

JobPack's scheduling and machine monitoring software can boost the efficiency of your shop by uncovering bottlenecks, unlocking best practices, and unleashing your hidden potential. And because JobPack is so easily implemented and adaptable, it's the truly actionable solution from everyone's point of view.



Visually intuitive

At-a-glance production scheduling allows you to work through multiple production scenarios, shuffle priorities, and make real-time course corrections to maximize throughput in real time.



Benefits for everyone

All levels of your organization will benefit from the highly adaptable, efficiency boosting scheduling and analytics of JobPack.

Owner/CEO

- Increase on-time delivery by as much as 17%
- Utilize the mountain of data you already own to increase productivity
- Run test-case scenarios to make executive decisions affecting marquee clients

Plant and Operations Managers

- Side-by-side scheduling comparisons lower risk of disruption
- Customize how you use your ERP data to tailor the results to your operations
- Make adjustments based on the dynamics of machine/staff changes

Purchasing and Finance Managers

- JobPack provides you with enhanced pricing guidance and sales staff management data
- Advanced scheduling allows just-in-time raw material inventory levels
- Better visualization of projected v. actual costs to enhance month-end budgeting

IT Staff

- JobPack installs the software, freeing your IT staff to continue working on day-to-day tasks
- What-if scenarios run in test-case mode, reversible without impacting live environment
- Easy server-to-server migration made possible by a straightforward admin process





Be smarter. Be faster.

You are sitting on a mountain of data: production scheduling and analytical information that can be used to accelerate your manufacturing processes and unleash the full potential of your shop. Our efficiency-boosting solution talks to your machines and communicates with your personnel in real time to move your business forward.

Know more

- Get enhanced pricing guidance and sales staff management data
- Run “what if” scenarios in test case mode without interfering with live environment
- See at-a-glance planned vs. actual reports daily, weekly, monthly, annually

Reduce risk

- Uncover downtime causes such as management, electrical, and programming issues
- Show future resource bottlenecks and correct them before they occur
- Plan just-in-time delivery of materials to avoid being stuck with inventory

Boost productivity

- Visualize all the jobs in your shop, their interoperability, and potential clashes
- View side-by-side comparisons and pick the best solution
- Make and keep your on-time delivery promises like never before



JobPack works because you will actually use it

No matter how effective your scheduling solution is, it's useless if no one can install it or figure it out. JobPack's software easily integrates into all areas of your organization and systems. Plus, with its at-a-glance visual interface, it's easy to understand and use.

Install success

- Our software is installed by our people so your IT staff can stay on task
- Easy server-to-server migration for maintenance
- Can operate as a standalone system without ERP data

Work together

- Tailor and customize your ERP data to work best for your organization
- Broadcast at-a-glance monitoring and scheduling on screens throughout your shop
- All levels of your organization can interact with the tools to update information

Do more

- Forecasting data can be a salesforce driver to make sure you fill gaps
- Meet month-end and annual sales numbers through enhanced budgeting
- Make better decisions quickly based on visual, side-by-side comparisons of options



Unleash the potential of smarter production

Who we serve

JobPack provides production management software solutions for metal cutting manufacturing companies in the aerospace, automotive, and job-shop industries. We understand the increasing pressures that manufacturers face in the real world, the way people collaborate, and the rapid results you demand. Our production scheduling and machine monitoring solutions are easy to implement and comprehensive in scope to provide extra value for your manufacturing IT dollar.

Smarter production. Faster results.

Successful on-time delivery begins with organized planning to ensure all moving parts are synchronized in the production process. With JobPack's production scheduling software — a world leader in production management solutions — you can boost your on-time delivery like never before, optimize production capabilities while achieving accurate delivery dates, and improve customer satisfaction.



***For more information, go to www.jobpack.com.
To schedule a demonstration, call 847-741-1861
or send us an email at: sales@jobpack.com.***

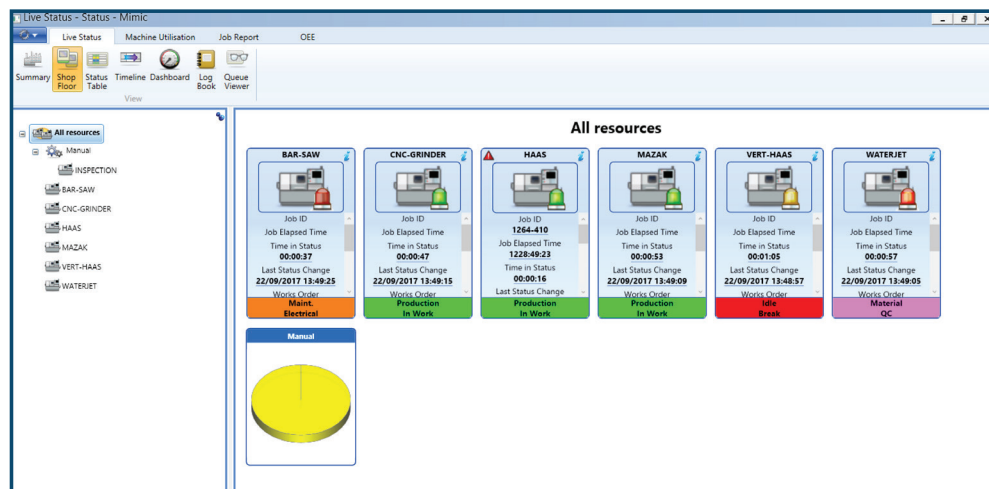
JobPack Production Scheduling Systems
1275 Davis Rd. Suite 130
Elgin, Illinois 60123

© 2017 JobPack All rights reserved.

Benefits for: **Owner/CEO**

Making you more efficient

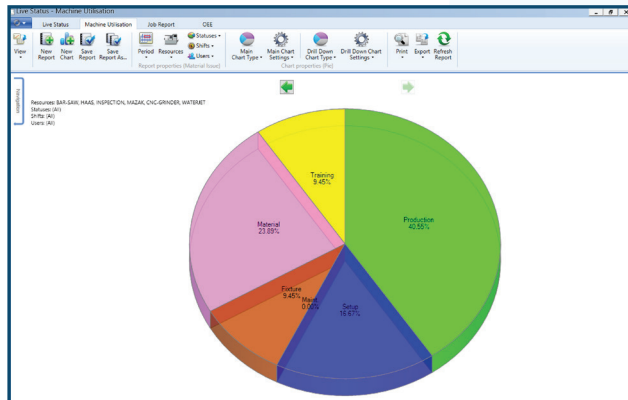
You are sitting on a mountain of data. Production scheduling and analytical information that can be used to accelerate your manufacturing processes and unleash the full potential of your shop. JobPack's easily adaptable software can move your business forward, unlocking efficiencies, and releasing your full capacity. First year JobPack users have increased their on-time delivery rates by 10%, 15% and higher. Be smarter. Be faster.



Keeping a close watch in real time on the machines in your shop is made simple with JobPack's scheduling and machine monitoring software.

Start with the right data

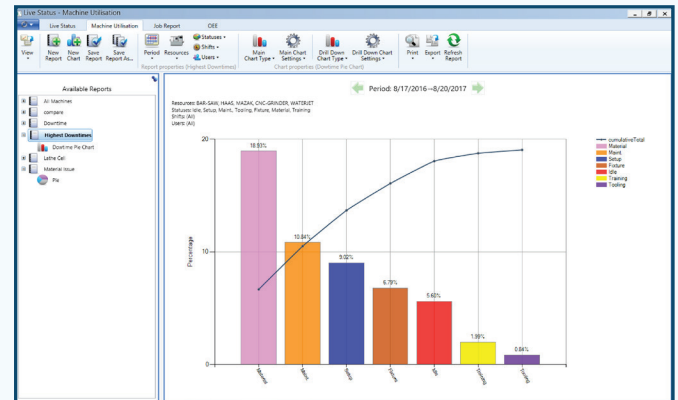
To make effective decisions about manufacturing execution, you need information. You need the right data, at the right time, but the traditional ledgers and spreadsheets you have come to rely on can only take you so far. You might not even have exposure to the data that is most important: Are jobs taking longer than they should? If so, why? Are we missing orders? Where might we be losing money? Jobpack's real-time scheduling and analytics software gives you the information you need to perform smarter and faster.



Analyzing downtime reasons for more than just the “hows” but looking into the “whys” can move your business forward.

Increase visibility

One way that JobPack’s scheduling and machine-monitoring software can help you implement manufacturing execution plans is by increasing traceability of jobs in your shop. When you increase the visibility of each step in the process, and collect data along the way, you can prevent potential clashing that could result from scheduling adjustments. You can correct the reasons for machine downtime, instead of just knowing that a machine is down. You can adjust your processes and procedures when you see that a step is taking too long. The information is there, in your shop. It’s always been there, now it’s time to put it to work for you.



Knowing that a machine is being utilized is important, but knowing how efficiently it is being utilized is imperative. JobPack’s Downtime Pareto Chart shows you all the KPI’s you need, empowering you to make adjustments for the highest throughput.

“Not knowing” puts you at risk

Time is money on the shop floor. The last thing you want to be doing is guessing or using imprecise spreadsheets to track productivity. With JobPack’s visually intuitive interface and deep-dive reporting, you can make informed adjustments to your processes, procedures, and staffing choices. Know why a machine is not running. Know why a job was late. And then execute plans based on real data, real metrics. You can reduce the risk of missing important delivery dates by improving efficiencies globally around your shop.

Day-to-day, year-over-year

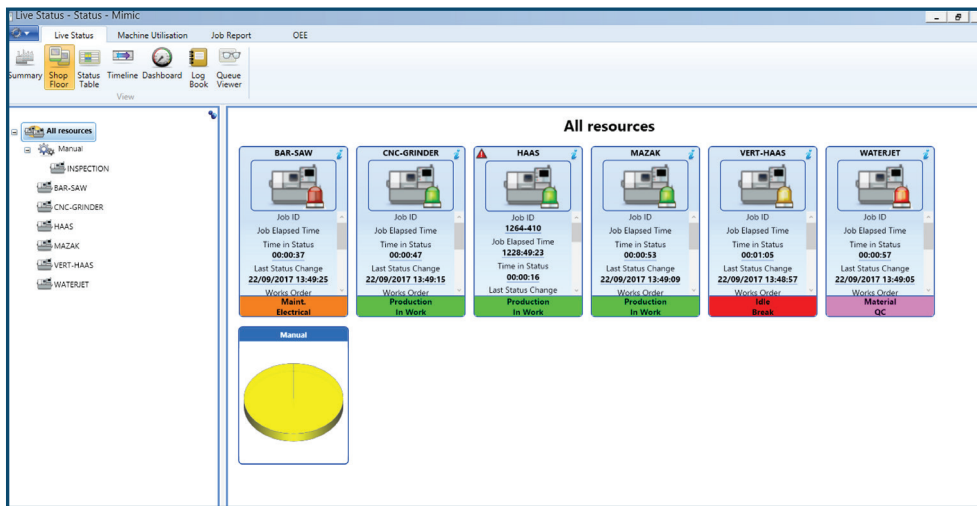
JobPack gives you real-time exposure to job, machine, and staffing status. You can run end-of-day reports to track progress. You can review end-of-month reports to see what effects your improvements have had. And you can examine year-end reports to make overarching adjustments to your shop floor. JobPack collects, analyzes, and reports on the smallest bits of data to help you see the biggest picture.

For more information, go to www.jobpack.com.
To schedule a demonstration, call 847-741-1861
or send us an email at: sales@jobpack.com.

Benefits for:
Plant-Operations Managers

Success is in the details

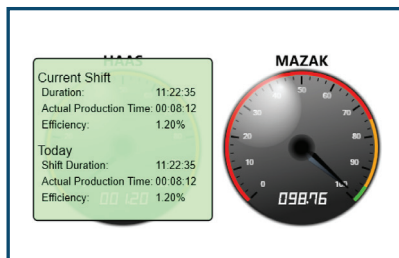
Current status, downtime reasons, root cause analysis of delays. These are the things that you focus on day-to-day, and JobPack gives you more detail than you've ever had before. Your goal of boosting on-time percentages and shop floor efficiency, monitoring machines and their operators, and shrinking plan vs. actual disparity is JobPack's goal too. Accelerate production. Unleash potential.



Keeping a close watch in real time on the machines in your shop is made simple with JobPack's scheduling and machine monitoring software.

Diagnose actual vs. planned performance

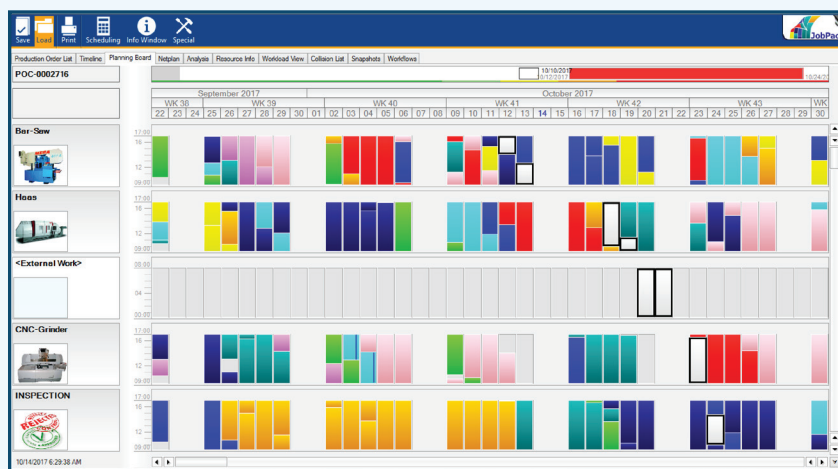
Tracking planned vs. actual performance in your shop is one thing. But actually doing a deep dive into the diagnostics to learn what really happened is critical. What caused a discrepancy? Supply chain issues, quality control delays, machine break/fix? With JobPack's strong reporting features, you can see why things actually happened and then improve your processes.



Analyze shift-specific performance and move work around to boost productivity.

Status	Job No.	Description	Part No.	Planned Parts	Delivery Date	Scheduled End	Finish Early/Late	Impact	Customer
Not Started	WO0288	Server Rack	100117979	250	9/24/2017	9/28/2017 12:24:42 PM	-1		Decker
In Work	WO1127	3.2" Spindle	4256433	10	9/26/2017	9/26/2017 10:14:40 AM	-1		
In Work	WO1055	Slide Shaft	6844	30	9/26/2017	9/22/2017 12:56:09 PM	-4		Brinell
In Work	WO1027	Valve Clend	119876	25	9/27/2017	9/22/2017 4:24:40 PM	-5		4 D C
Not Started	WO1080	Leibond shaft	9848	150	9/27/2017	9/26/2017 10:50:11 AM	-1		4 D C
Not Started	WO0452	Maintenance		1	9/27/2017	9/26/2017 10:10:13 AM	-1		
Not Started	WO1075	Valve Clamp	25488	1	9/28/2017	9/27/2017 12:54:41 PM	-1		Toyot
Not Started	WO0343	DEMO Pressure Nut	NU-DRG-H01343	50	9/28/2017	10/2/2017 2:23:10 PM	-1		Atlas
Not Started	WO1115	Block Order	2525	150	9/28/2017	9/26/2017 10:29:40 AM	-3		DSE
Not Started	WO0311	Gage 1209	321-456	150	9/29/2017	10/27/2017 12:04:44 PM	-23		Gene
Not Started	WO1121	Shaft Pin	4256712	20	9/29/2017	10/24/2017 12:14:55 PM	-23		
In Work	WO0494	4" Spindle	091278	100	9/29/2017	10/3/2017 12:48:35 PM	-15		
In Work	WO1110	CT Demo Valve	2589	125	9/30/2017	9/27/2017 2:29:41 PM	-3		MSC
Not Started	WO0281	Pin Mount	1a	150	9/30/2017	10/4/2017 1:17:15 PM	-1		Detekt
In Work	WO0414	14" 4PL	PO 122854	100	10/3/2017	10/4/2017 2:26:36 PM	-1		4 D C
Not Started	WO1120	3.2" Spindle	4256433	20	10/4/2017	10/19/2017 4:14:54 PM	-10		
Not Started	WO0276	DEMO Pressure Nut	NU-DRG-H01343	20	10/4/2017	9/22/2017 2:14:38 PM	-12		Atlas
Not Started	WO0496	Leibond shaft	9848	150	10/5/2017	9/28/2017 7:18:33 PM	-6		4 D C
Not Started	WO1116	Shaft Pin	4256712	15	10/5/2017	9/27/2017 9:14:41 AM	-3		
Not Started	WO1033	Shackle	12556	1000	10/6/2017	10/4/2017 1:39:40 PM	-2		Rolls
Not Started	WO1031	Shackle	12556	1000	10/6/2017	10/23/2017 12:04:43 PM	-17		Rolls
Not Started	POC-0002726	Sheet Cut for Stock	061704	10	10/6/2017	9/25/2017 12:14:40 PM	-11		
In Work	WO1089	Vertical Rod Pin	1264-4	75	10/6/2017	10/5/2017 3:30:00 PM	-1		Proto
Not Started	WO1094	Flow pins	284	75	10/7/2017	10/18/2017 4:50:01 PM	-12		DSE
Not Started	WO0260	Swelley Component	100290228	150	10/7/2017	10/6/2017 2:12:29 PM	-10		Toyot
In Work	WO1044	Spindle Shaft	1a	75	10/7/2017	9/29/2017 8:00:00 AM	-8		Mar-
In Work	WO0345	Valve Body for M45-6	1-256	60	10/7/2017	10/10/2017 1:53:45 PM	-1		Tharr
Not Started	POC-0002729	Sheet Cut for Stock	061704	5	10/8/2017	9/27/2017 3:14:43 PM	-10		
Not Started	POC-0002732	Sheet Cut for Stock	061704	10000	10/6/2017	10/5/2017 10:23:10 AM	-15		
In Work	WO0344	500 DIA. 3FLT. 90EM	P08-001	25	10/9/2017	10/2/2017 11:34:41 AM	-7		Atlas
Not Started	POC-0002733	Sheet Cut for Stock	061704	5	10/9/2017	10/4/2017 2:40:43 PM	-4		

Quickly detect root causes for potential delays and remove them to accelerate shop floor efficiency with the Production Order List.



The Planning Board view of JobPack's scheduling and machine monitoring software can help you see the adjustments you need to make to machine and staffing levels, based on all movements in the schedule.

Early detection

Shift-to-shift productivity can easily be diagnosed at-a-glance with JobPack's scheduling and machine monitoring software. Does the first shift outperform the third shift on a specific type of job? You will be able to see it and adjust the jobs as appropriate to maximize your efficiency.

End the guessing

Time is money on the shop floor. The last thing you want to do is rely on static and imprecise spreadsheets to track productivity. With JobPack's visually intuitive interface and deep-dive reporting, you can confidently make fully-

informed adjustments to your processes, procedures, and staffing choices. Know why a machine is not running. Know why a job is running late. And then make precise adjustments based on real-time data, real metrics.

Day-to-day, year-over-year

JobPack gives you real-time exposure to job, machine, and staffing status. You can run end-of-day reports to track progress. You can review end-of-month reports to see what effects your improvements have had. And you can examine year-end reports to make overarching adjustments to your shop floor. JobPack collects, analyzes, and reports on the smallest bits of data to help you see the biggest picture.

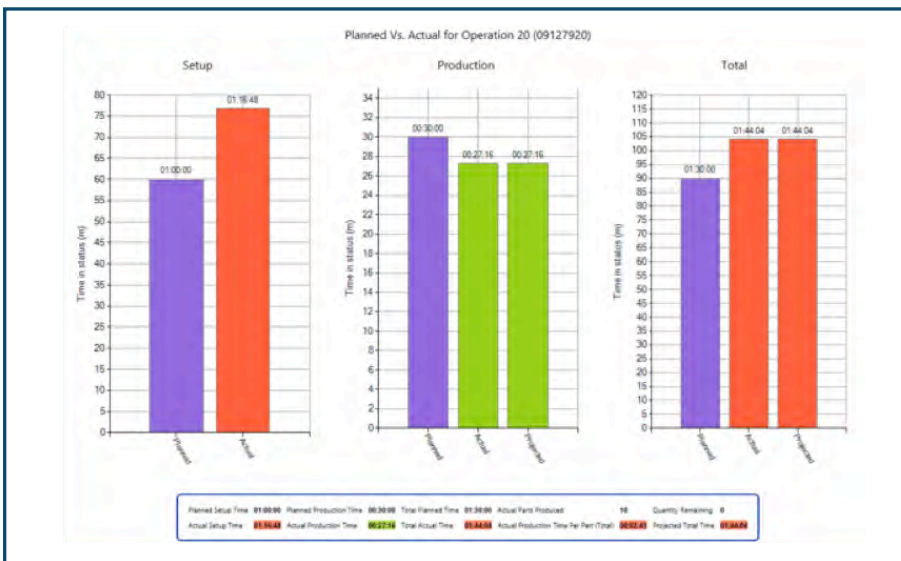
For more information, go to www.jobpack.com.
To schedule a demonstration, call 847-741-1861
or send us an email at: sales@jobpack.com.

Benefits for:

Purchasing and Finance Managers

Better processes, better results

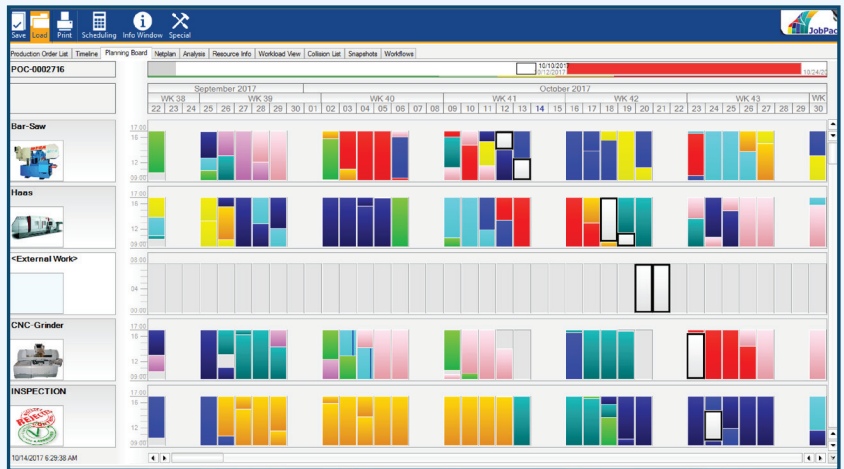
You are tasked with budgeting, pricing, and inventory for your shop. Imagine doing that job with a wealth of knowledge you didn't have before: labor and setup costs, project vs. actual costs, accurate inventory predictions. JobPack's real-time scheduling and analytics will help you be more precise, more accurate, and more productive. Be smarter. Be faster.



At-a-glance reporting, such as this Planned vs. Actual Production Times chart, gives you information that you didn't have before, with accuracy and precision.

Just-in-time materials

Which jobs will your shop be running three weeks from now? If you don't know, how will you know what materials to bring in? With JobPack's easy-to-use visual scheduling system, you can forecast exactly when you will need what you will need. Your shop will save on expediting fees for rush orders, inventory costs for storing materials before they're needed, and potential customer discounts due to late jobs.



By scheduling a potential job in test mode, you can see where it will fit into your current mix and move it around the Planning Board to uncover possible conflicts with existing job timelines, machine assignments, and material needs.

Missing Material								
Material Missing	Job Number	Description	Status	Description	Part ID #	Delivery Date	Finish Early/Late	Planned Start
	1 WO1050		Not Started	Spindle 0487	1a	11/1/2017	-8	10/11/2017 3:57:48 P
	1 POC-0002728	PO480494	Not Started	Sheet Cut for Stock	061704	10/18/2017	-1	10/16/2017 10:18:31 A
	1 POC-0002733	Steel cold rolled 1/2" di	Not Started	Sheet Cut for Stock	061704	10/25/2017	0	10/24/2017 4:44:32 P
	1 POC-0002944	Titanium 8484-13	Not Started	Pin Mount	959-261	11/19/2017	4	10/26/2017 10:44:34 A

The Missing Material screen will help you get visibility into critical raw material needs and when they must be filled to stay on schedule.

Visibility is the key

For your specific role, JobPack's scheduling and machine monitoring software has several at-a-glance views of your shop status that you will check every day. And all of these new, more powerful tools are quickly set up by JobPack engineers, with no integration or administrative burden to your IT staff. Installation is likewise separate and secure, with no threat to existing data operations. Being on top of production on the floor will be easier and more accurate than ever before.

Notifications speak volumes

Adapting to the JobPack system is easy, as well. You can have notifications sent to you automatically when critical parts are needed and for other trigger points to the schedule. What works best for you? Notifications in your email? Your screen? JobPack can easily be customized to work the way you do.

Better, more efficient, processes

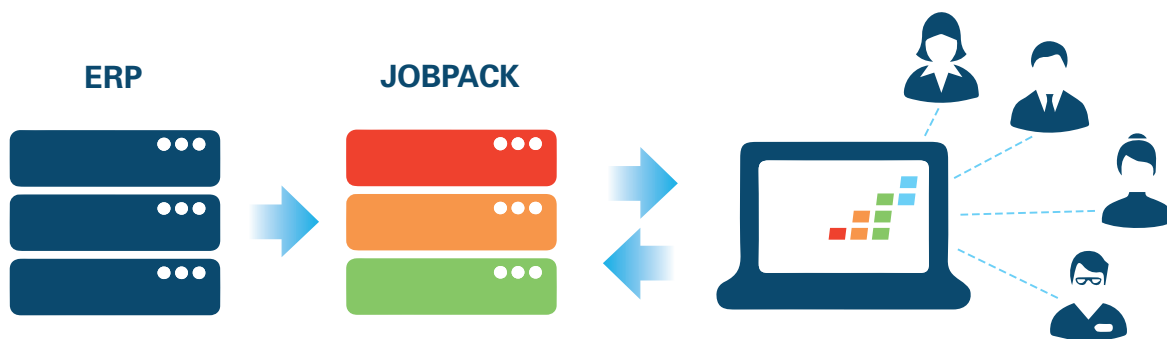
JobPack will help you to fill up time on your machines and keep your staff busy. By monitoring open capacity, not only can you make sure your machines are working to peak efficiency, but also you can direct the sales force to concentrate on bringing in more jobs to fill specific gaps. Plus if a potential customer asks you how long a specific job will take, you can run a schedule in test mode to not only see how long it would take by itself, but also where it can best fit into your current lineup of other priority jobs.

For more information, go to www.jobpack.com.
To schedule a demonstration, call 847-741-1861
or send us an email at: sales@jobpack.com.

Benefits for: IT Staff

Making IT easy

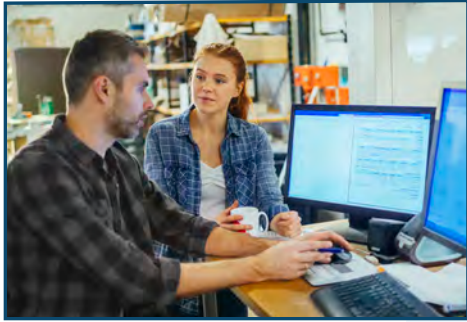
You have enough to do on a daily basis to keep your shop's systems running smoothly: planned maintenance, updates, break-fix. The last thing you want is a new system to install and manage. Well the good news is JobPack's team of professional engineers will do its software installation, integration, and administration work for you while you concentrate on doing your job well.



With your own ERP data, the JobPack system runs on your server and is accessible from shortcuts on your shopfloor PC's. JobPack engineers make installation and ongoing maintenance simple.

Fast deployment. Low maintenance.

JobPack software is installed on your server, with the clients getting only a shortcut on their desktops. There's no need to install on numerous local machines. This results in fast deployment, low maintenance, and little participation required from you when changes need to be made or updates performed to the software.



Easy updates

When it's time for a software update, the update function in the software is quick and easy to use. Plus it only needs to be run on the server, there's no need to touch each PC to perform an update. No reimaging of the client PC's is needed.

Fast server-to-server migration

If you procure new hardware — such as a server — you'll only need to copy the files and .exe images to it and reconnect to the database. JobPack will be up and running in a flash.



Data migration made simple

Experienced JobPack engineers will import your ERP data and manage the data mapping offsite so you don't have to worry about it. JobPack has handled most ERP database schemas so your data is safe and you can trust they'll get it right. They will be happy to review the import with you before deployment on your server so you are completely satisfied and on board.

Windows Active Directory compliant

JobPack software is Windows Active Directory compliant. The security to the data and the application can be controlled using active directory security groups. IT user maintenance is done at the Windows Active Directory level and not spread to the application level.

*For more information, go to www.jobpack.com.
To schedule a demonstration, call 847-741-1861
or send us an email at: sales@jobpack.com.*